

National Electronic Interstate Compact Enterprise

Putting kids in safe, permanent homes across state lines faster and reducing paperwork and costs.

THE CHALLENGE

To place children across state lines for adoption or foster care, state child welfare agencies use the rules in the Interstate Compact on the Placement of Children. The antiquated paper-based process averages 6-12 months, leaving children in limbo who could be moved to a safe home more quickly.

THE SOLUTION

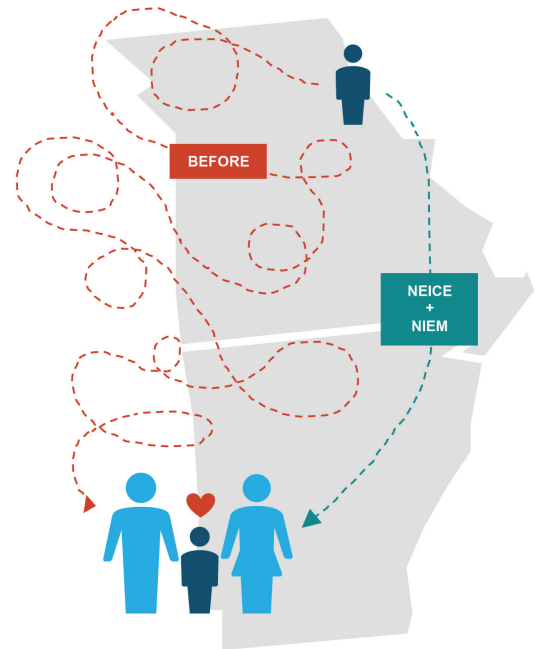
In 2013, The Association of Administrators of the Interstate Compact on the Placement of Children (AAICPC) spearheaded a pilot effort to allow state children welfare agencies to share information and forms electronically across state lines (the National Electronic Interstate Compact Enterprise (NEICE)).

THE RESULTS

- The pilot evaluation found that the time to process a placement request was reduced by almost 40 percent for states using the NEICE.
- If implemented nationally, the cost savings from eliminating printing and mailing will be an estimated \$1.6 million.
- Because NEICE uses reusable NIEM-based exchanges, all states can potentially participate in NEICE without having to create one-off state specific interfaces. The goal is to have all 50 states, D.C., and the U.S. Virgin Islands using NEICE by 2018.
- NEICE can even be expanded to connect with other human services:

“Our vision is not only to create a platform that transforms the interstate administrative process for potential expansion to all states, but to demonstrate that the attributes of NEICE can be transferable when developing interconnected systems and programs across all health and human services.”

The American Public Human Services Association and the Association of Administrators of the Interstate Compact on the Placement of Children



NIEM'S IMPACT

- Pilot states can exchange information across organizational and technical boundaries
- Allowed partners to retain legacy systems, which reduces implementation costs
- Placed children in loving homes faster
- Expandable and flexible to meet the exchange needs of the Human Services community
- Reusable exchanges promote national expansion opportunities, saving time and money